

Welcome

THANKS FOR JOINING US



**Edwards
Spur Road**



EAGLE COUNTY



Edwards Spur Road

EMAIL: edwards@cig-pr.com

HOTLINE: 970-446-1001

WEBSITE: codot.gov/projects/edwards-spur-road

Purpose of Meeting

- INTRODUCTION TO THE PROJECT TEAM
- OVERVIEW OF CONSTRUCTION ACTIVITIES
 - DESIGN
 - SCHEDULE
 - TRAFFIC IMPACTS
- LEARN HOW TO STAY INFORMED
- ANSWER YOUR QUESTIONS

PLEASE SIGN IN





Edwards Spur Road

EMAIL: edwards@cig-pr.com

HOTLINE: 970-446-1001

WEBSITE: codot.gov/projects/edwards-spur-road

Core Values



SAFETY

Managing bicyclist, pedestrian, and vehicle interactions to prevent crashes.



MOBILITY

Addressing capacity and operational deficiencies to reduce queues, decrease congestion, and improve travel times for all modes.



COMMUNITY CHARACTER

Maintaining and enhancing town character.



COLLABORATIVE DECISIONS

Partnering with the community throughout project development and construction.



HEALTHY ENVIRONMENT

Preserving the natural environment.



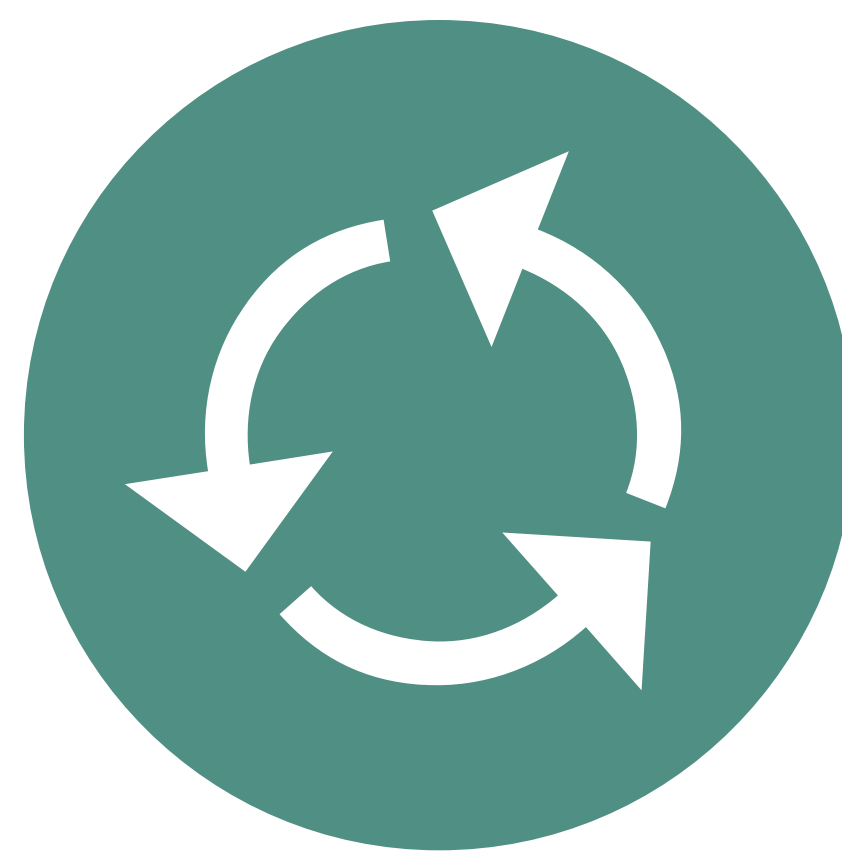
CONSTRUCTABILITY

Project minimizes disruption and property/right-of-way impacts to local property owners and businesses.



CONNECTIVITY

Optimizing the movements of vehicles, bicyclists, pedestrians and transit users through the project area.



SUSTAINABILITY

Constructing a project that addresses future needs, can be easily and cost-effectively maintained and supports economic vitality.

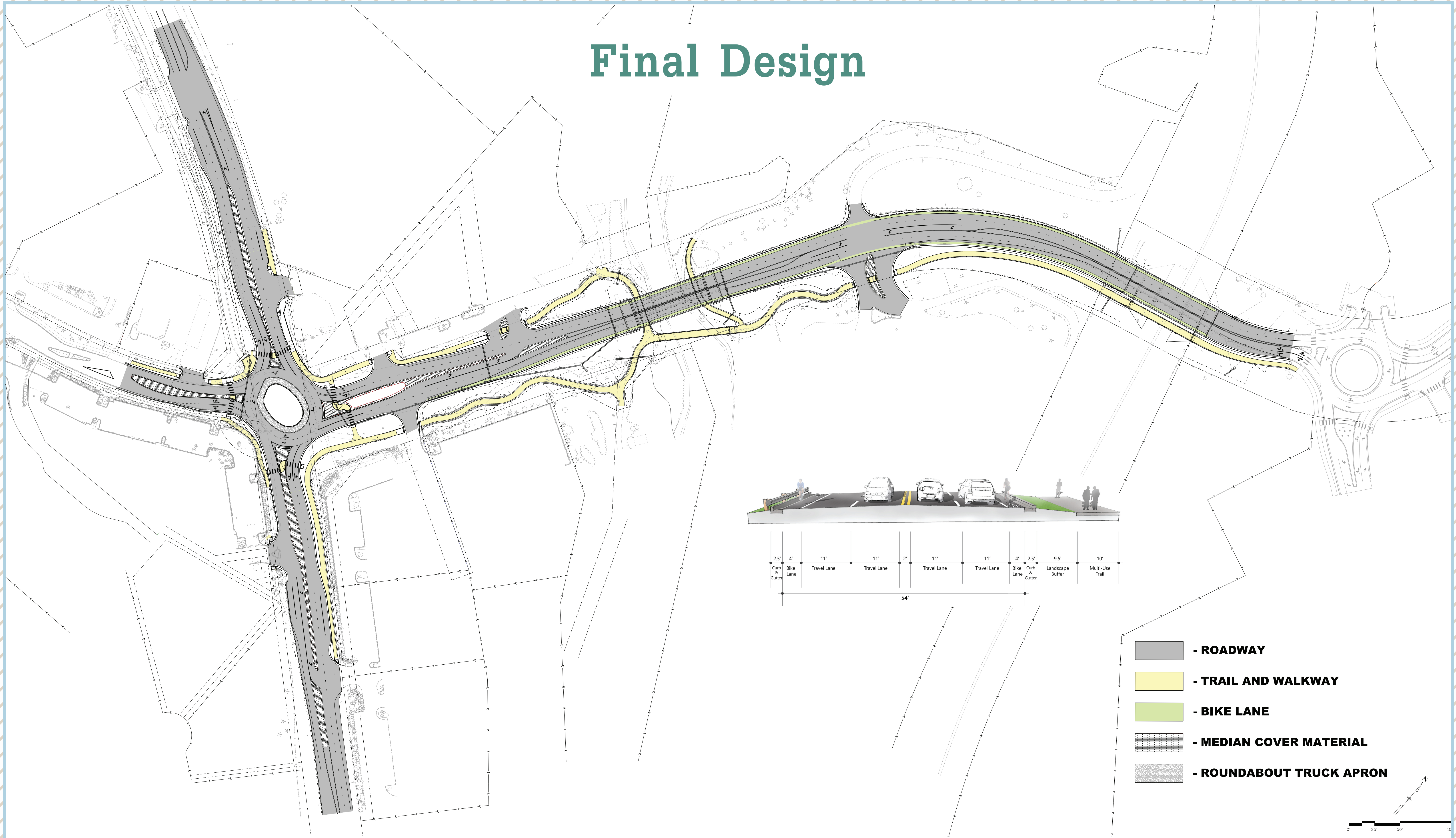


Edwards Spur Road



EMAIL: edwards@cig-pr.com HOTLINE: 970-446-1001
WEBSITE: codot.gov/projects/edwards-spur-road

Final Design





Edwards Spur Road

EMAIL: edwards@cig-pr.com

HOTLINE: 970-446-1001

WEBSITE: codot.gov/projects/edwards-spur-road

Environmental Information

RESOURCE IMPACTS AND BENEFITS

POSITIVE BENEFITS

- Water Quality
- Floodplain
- River Resources
- Aesthetics and Landscaping
- Bicycle and Pedestrian Facilities
- Parks and Recreation Resources
- Community Cohesion

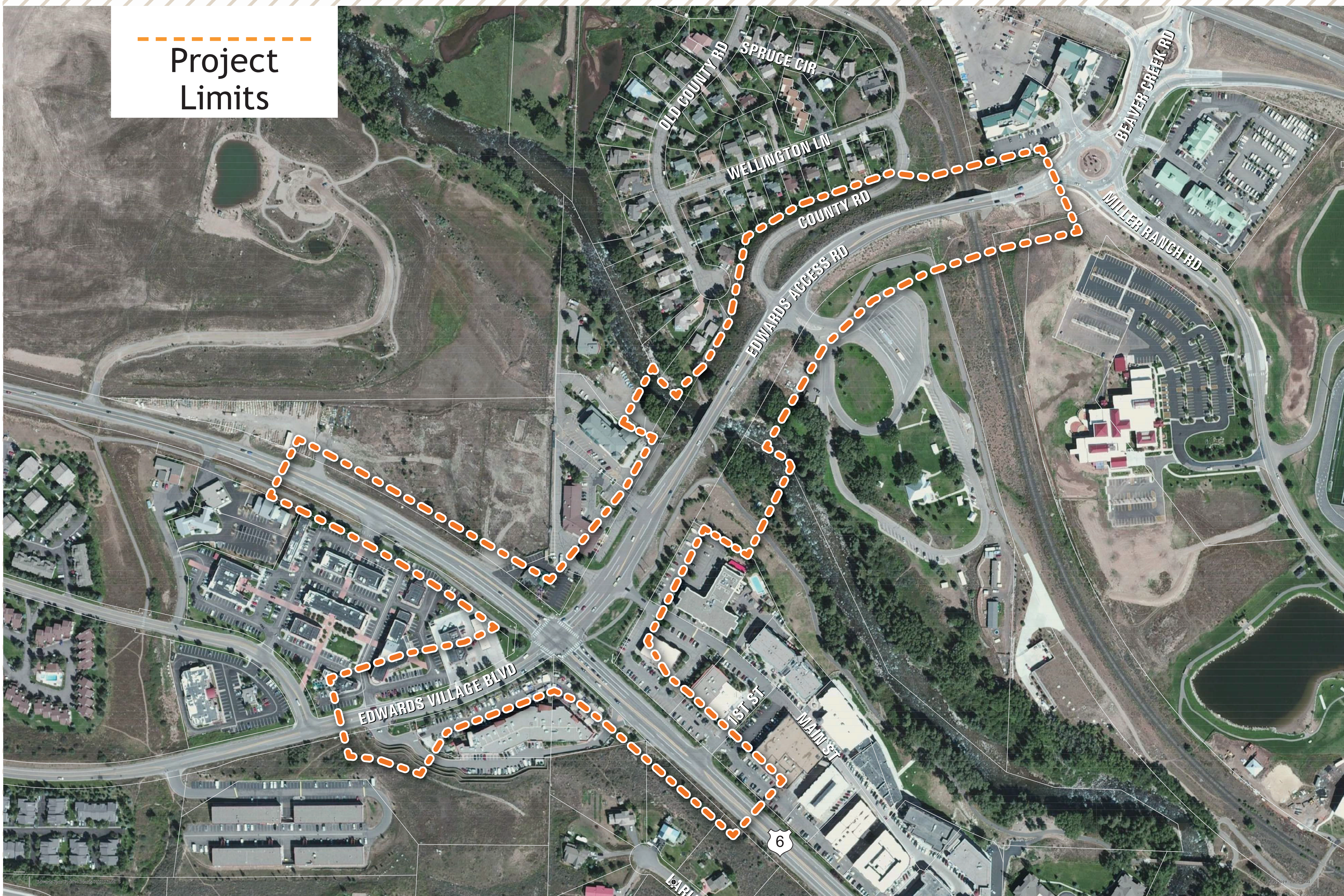
NO BENEFIT/NO IMPACT

- Hazardous Materials
- Historic Resources
- Wetlands
- Noise
- Air Quality

MINIMIZED IMPACTS

- Disturbance Area
- Waters of the U.S.
- Right-of-Way

Project Limits



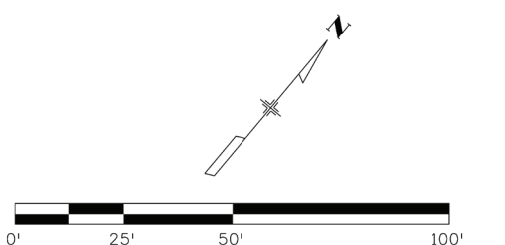
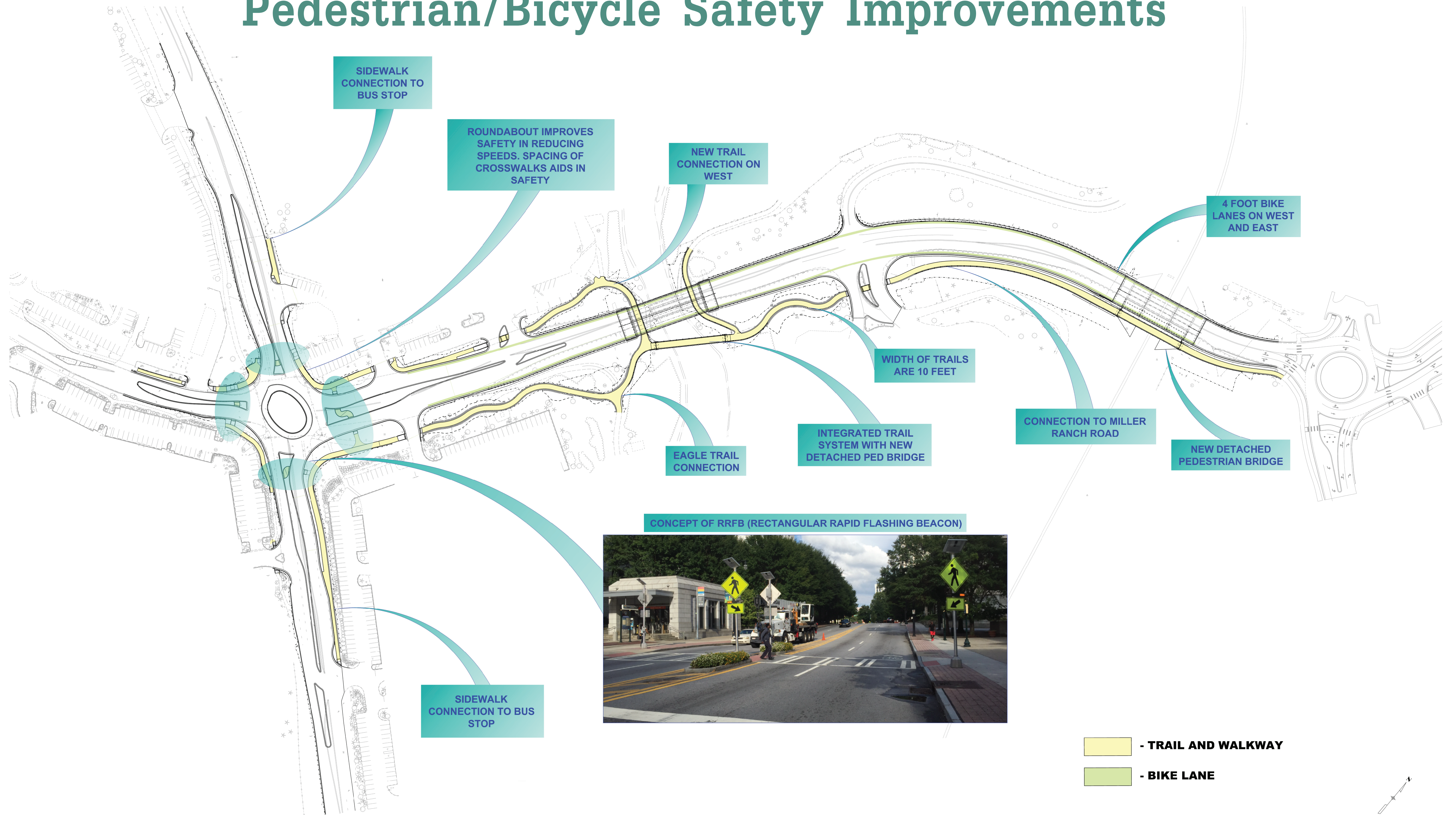


Edwards Spur Road



EMAIL: edwards@cig-pr.com HOTLINE: 970-446-1001
WEBSITE: codot.gov/projects/edwards-spur-road

Pedestrian/Bicycle Safety Improvements





Edwards Spur Road



EMAIL: edwards@cig-pr.com HOTLINE: 970-446-1001
 WEBSITE: codot.gov/projects/edwards-spur-road

Tentative Construction Schedule

Task	2019												2020						
	JAN	FEB	MARCH	APRIL	MAY	JUNE	JULY	AUG	SEPT	OCT	NOV	DEC	JAN	FEB	MARCH	APRIL	MAY	JUNE	
Spur Road – Phase 1 (East Side)																			
Spur Road – Phase 2 (West Side)																			
Roundabout – Phase 1																			
Roundabout – Phase 2																			
Landscaping																			

*Many construction activities are weather dependent so this schedule is subject to change.

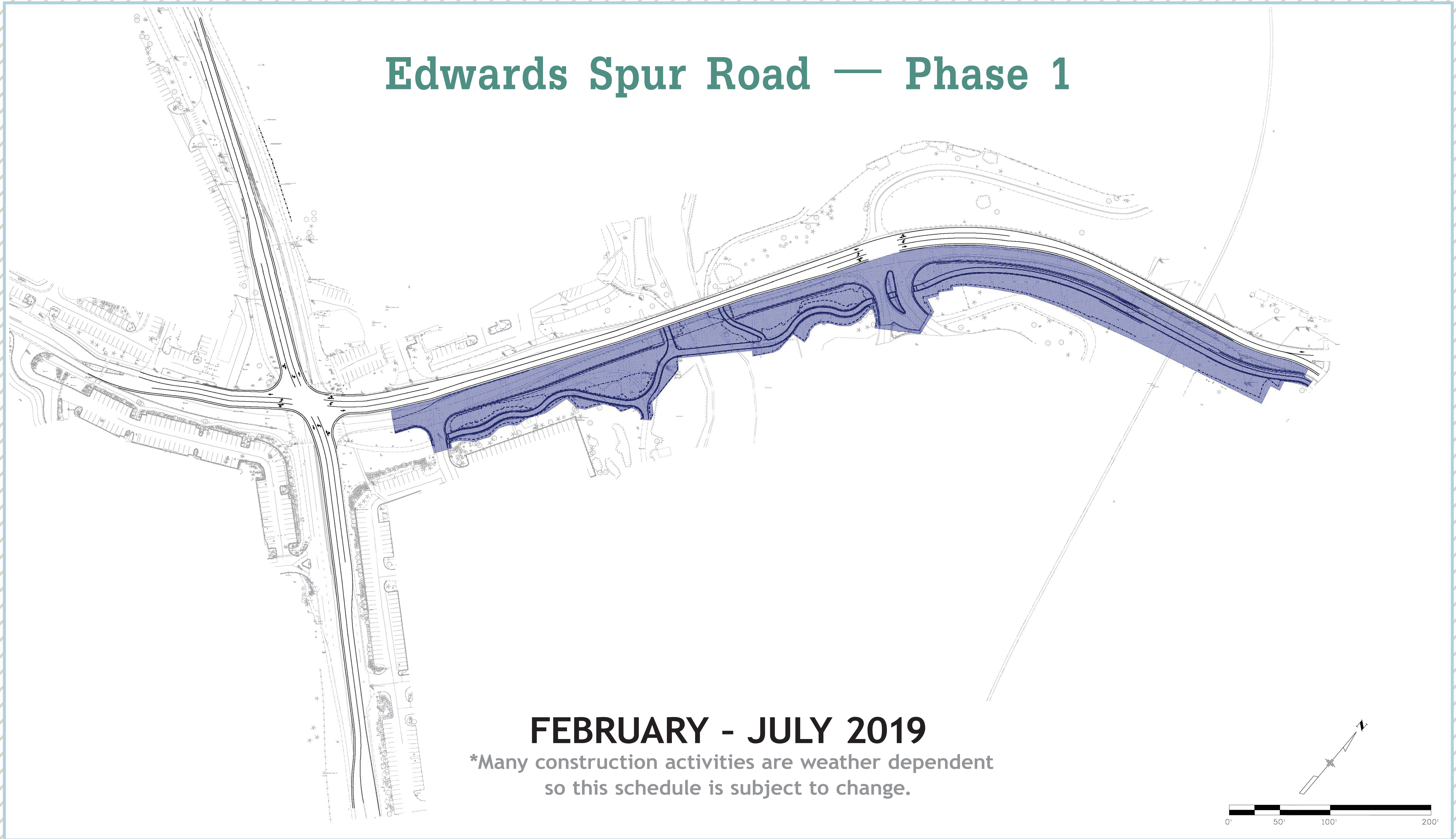


Edwards Spur Road



EMAIL: edwards@cig-pr.com HOTLINE: 970-446-1001
WEBSITE: codot.gov/projects/edwards-spur-road

Edwards Spur Road — Phase 1



FEBRUARY - JULY 2019

*Many construction activities are weather dependent so this schedule is subject to change.

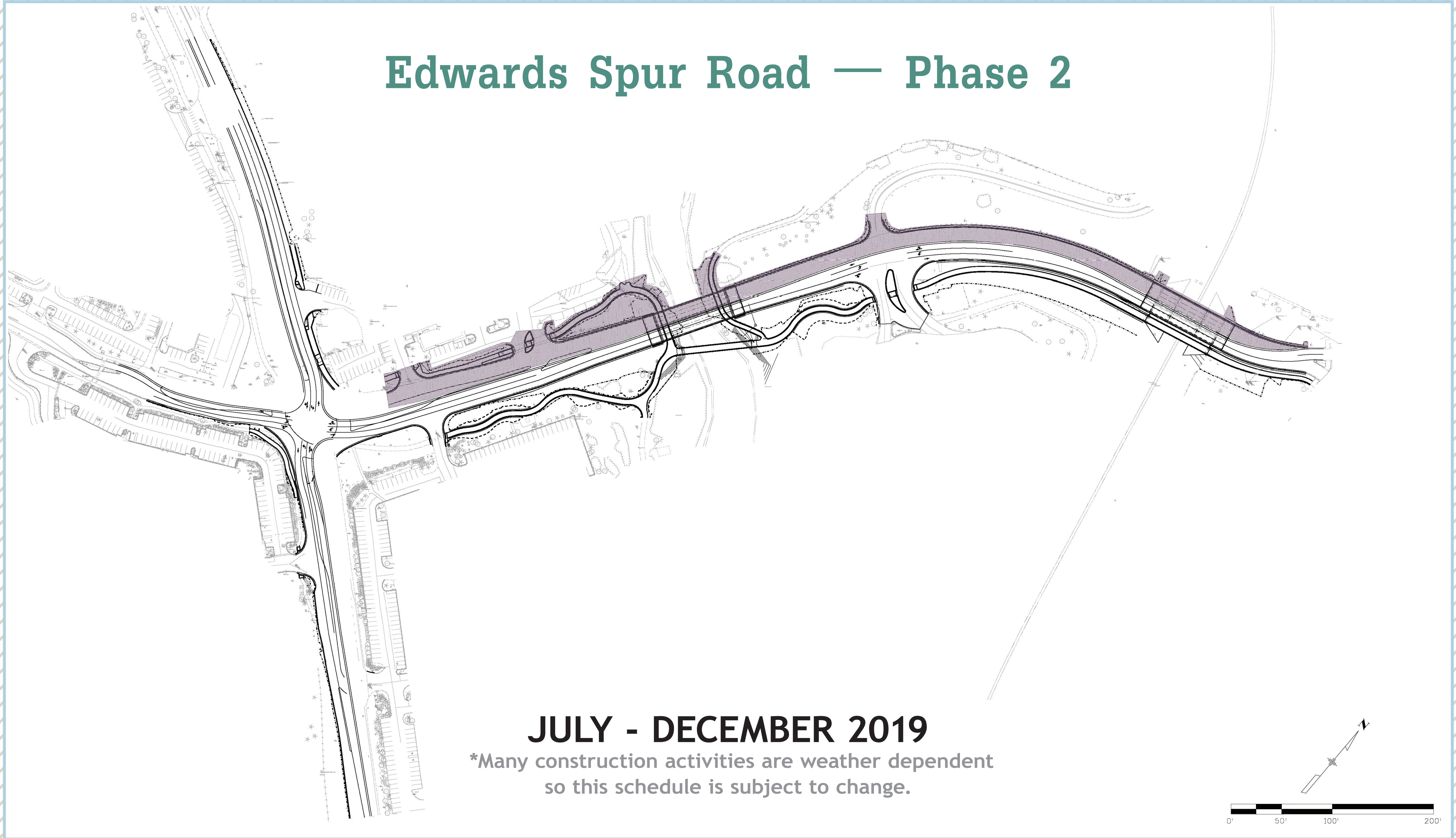


Edwards Spur Road



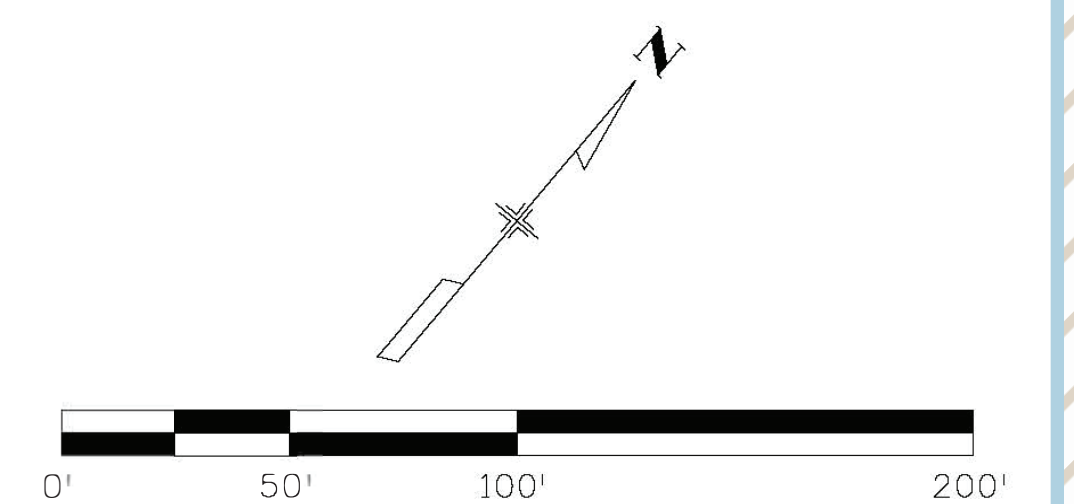
EMAIL: edwards@cig-pr.com HOTLINE: 970-446-1001
WEBSITE: codot.gov/projects/edwards-spur-road

Edwards Spur Road — Phase 2



JULY - DECEMBER 2019

*Many construction activities are weather dependent so this schedule is subject to change.



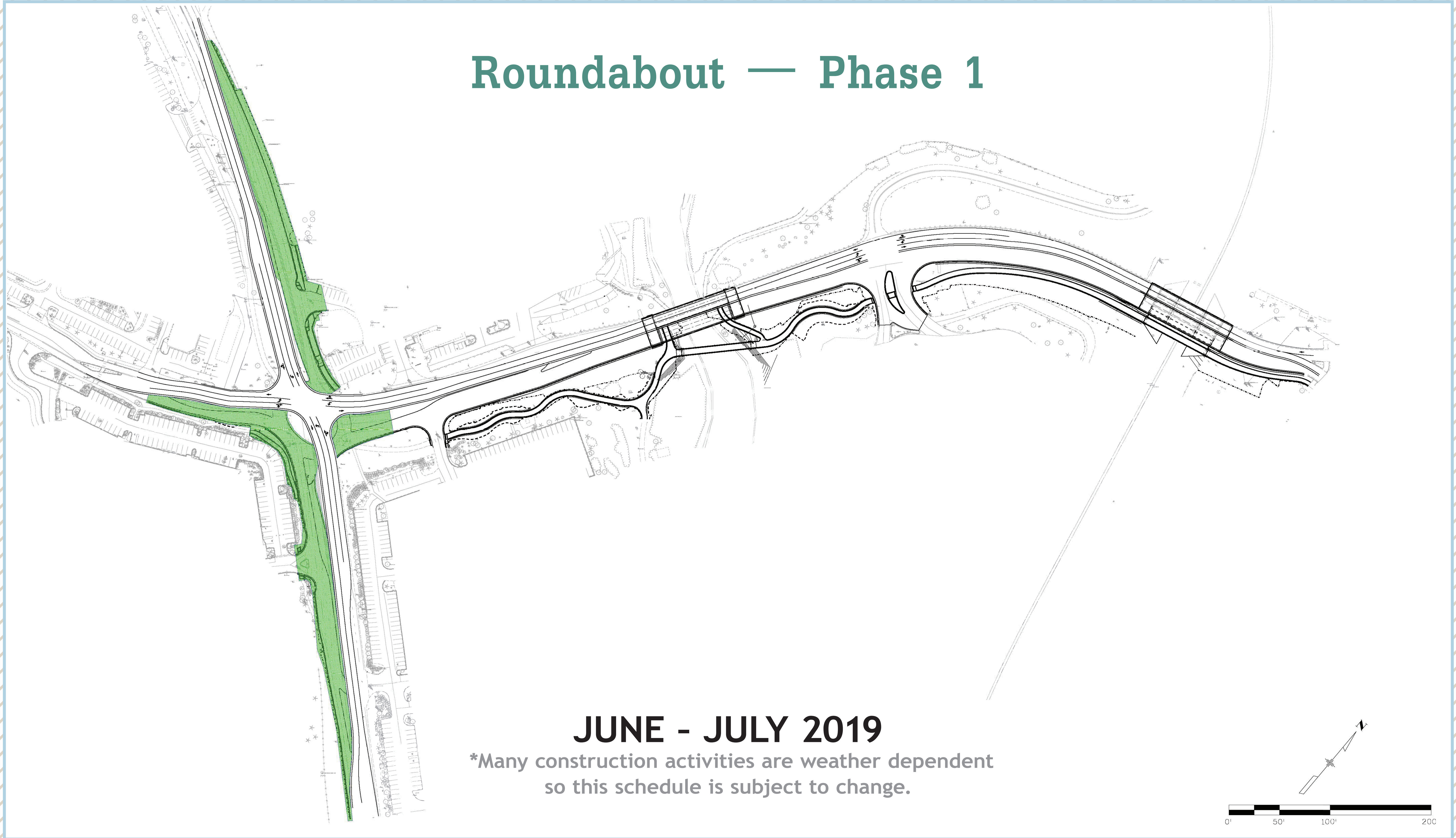


Edwards Spur Road



EMAIL: edwards@cig-pr.com HOTLINE: 970-446-1001
WEBSITE: codot.gov/projects/edwards-spur-road

Roundabout — Phase 1



JUNE - JULY 2019

*Many construction activities are weather dependent so this schedule is subject to change.

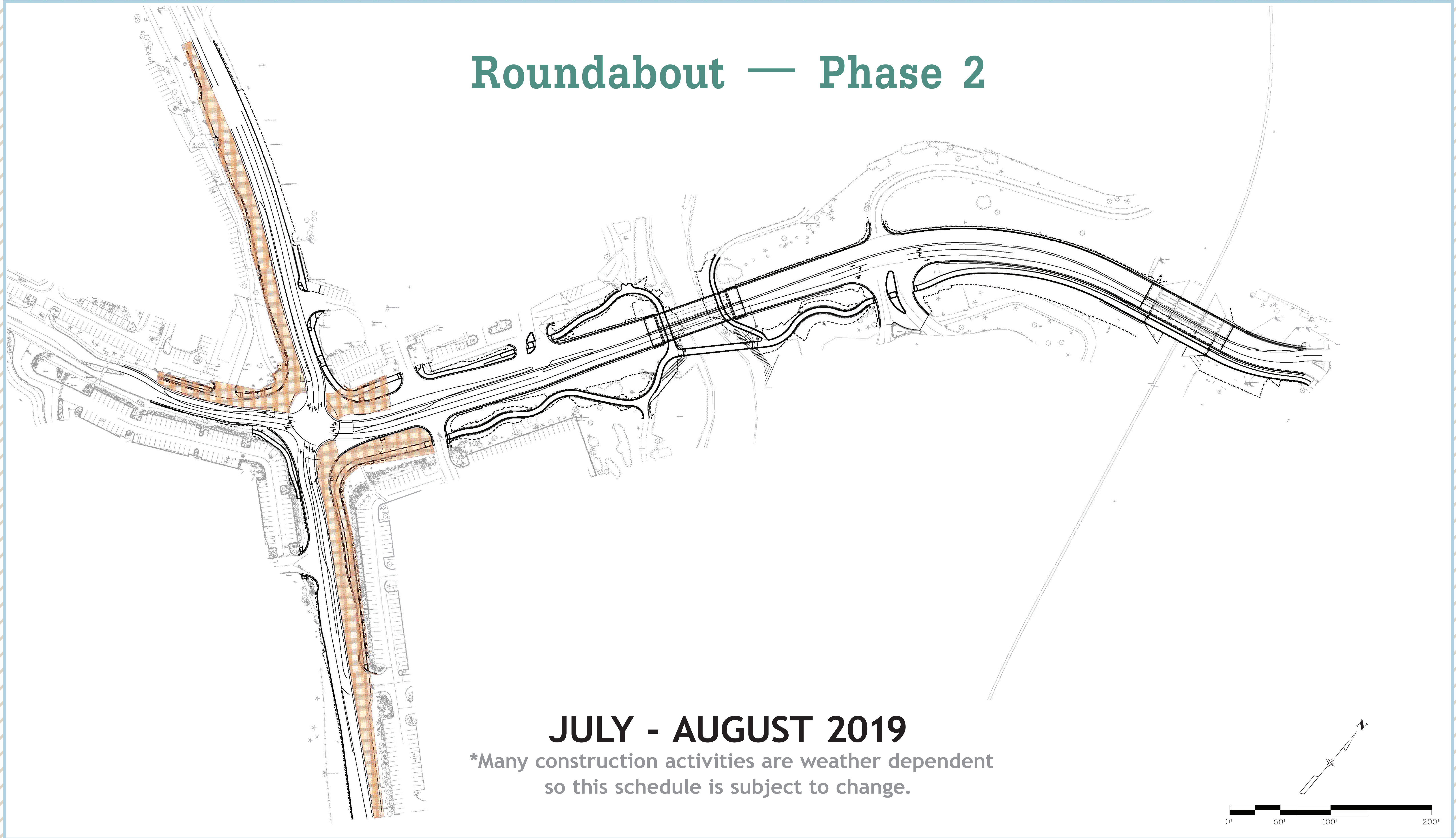


Edwards Spur Road



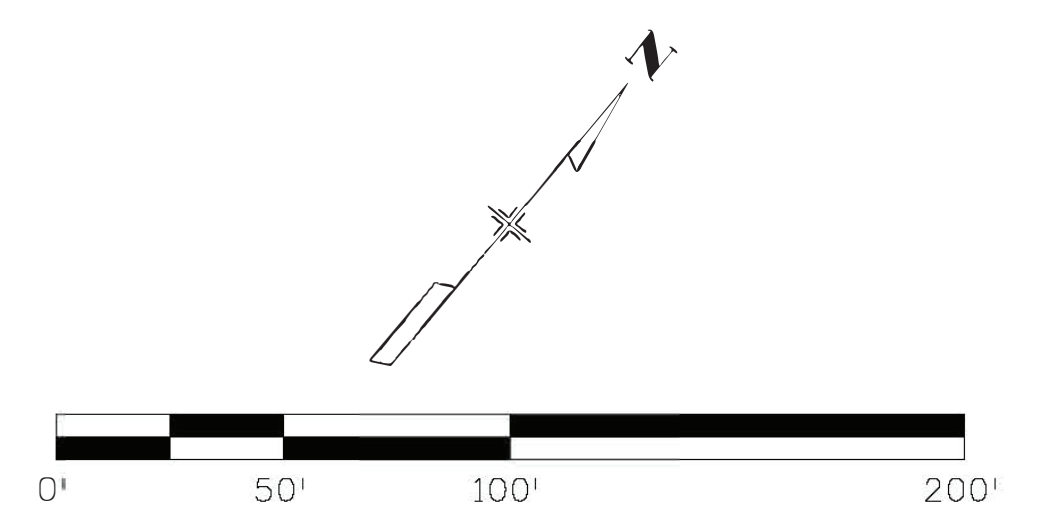
EMAIL: edwards@cig-pr.com HOTLINE: 970-446-1001
WEBSITE: codot.gov/projects/edwards-spur-road

Roundabout — Phase 2



JULY - AUGUST 2019

*Many construction activities are weather dependent so this schedule is subject to change.

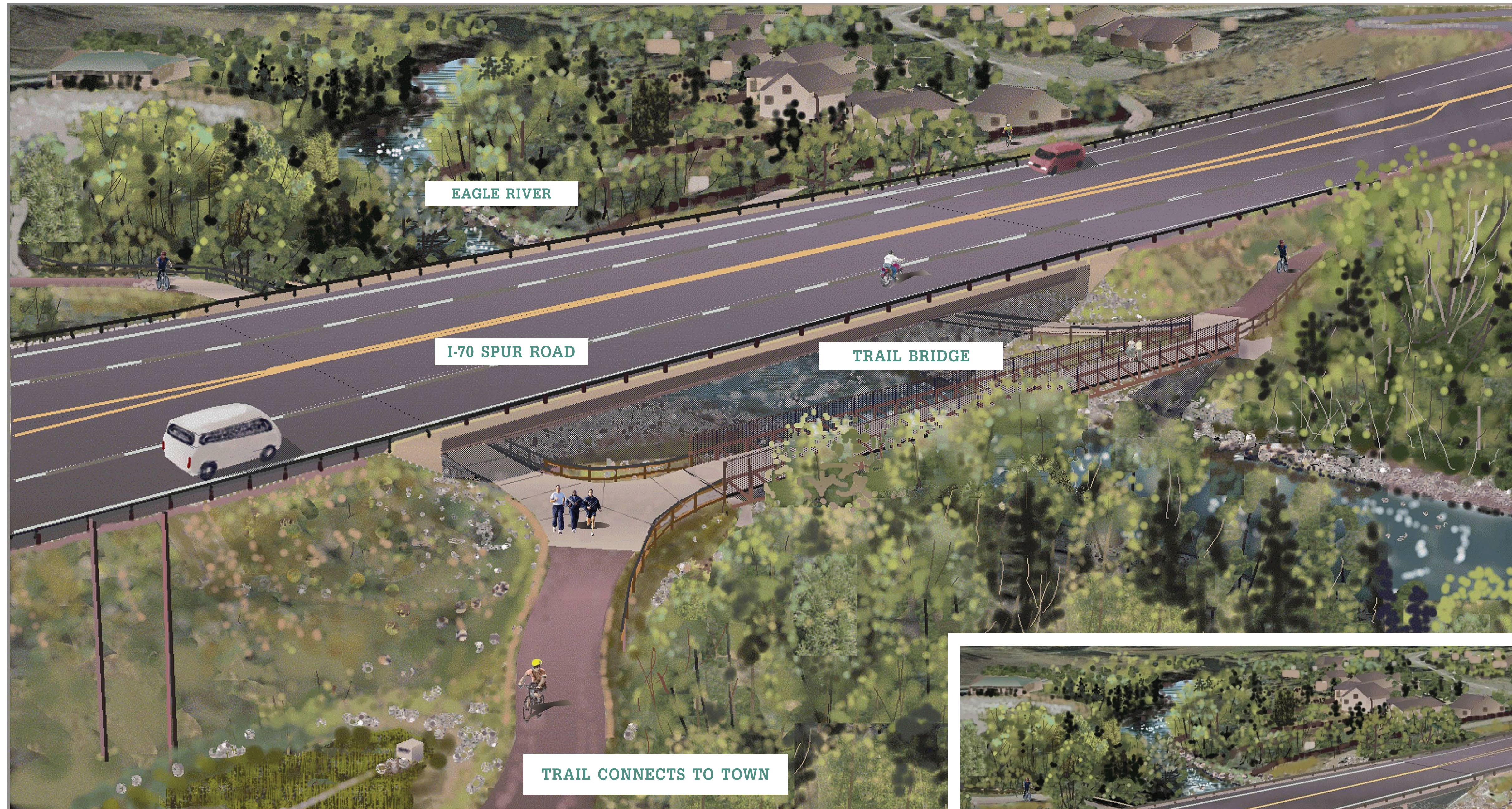




Edwards Spur Road



EMAIL: edwards@cig-pr.com HOTLINE: 970-446-1001
WEBSITE: codot.gov/projects/edwards-spur-road



Edwards Access Road at the Eagle River

The existing bridge will be removed and replaced. The new bridge will be nearly twice as wide to accommodate four lanes. The new single-span bridge will remove the piers from the river and improve river health.

There is a new trail bridge on the east side of the roadway and two trails under the bridge connecting to the new trail bridge.





Edwards Spur Road



EMAIL: edwards@cig-pr.com HOTLINE: 970-446-1001
WEBSITE: codot.gov/projects/edwards-spur-road



Intersection of US 6 and Edwards I-70 Spur Road

This is a two lane oval shaped roundabout intersection.

Landscape character is similar to Miller Ranch Road Roundabout, to blend with Phase 1 landscape theme.

New north-south multi-use recreation path along east side of spur road. New trail connection along west side of spur road to Eagle River pedestrian Bridge.

Pedestrian push button activated LED flashing signs at crosswalks on all legs of roundabout





Edwards Spur Road

EMAIL: edwards@cig-pr.com

HOTLINE: 970-446-1001

WEBSITE: codot.gov/projects/edwards-spur-road

Stay In Touch



EMAIL: edwards@cig-pr.com



HOTLINE: 970-446-1001



WEBSITE: codot.gov/projects/edwards-spur-road

SIGN IN TO BE ADDED TO OUR EMAIL LIST

